

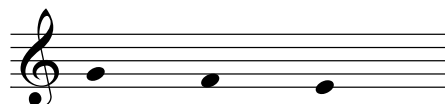
Improvisation samples (unworked): Melodic

Initial

0 mc ms-3



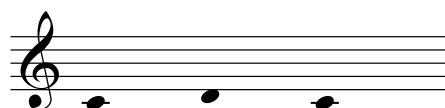
0 mc ms-6



0 mc ms-7



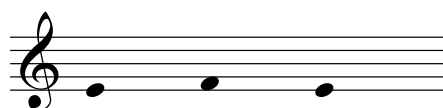
0 mc ms-8



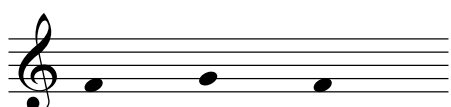
0 mc ms-9



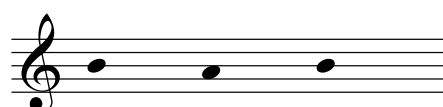
0 mc ms-10



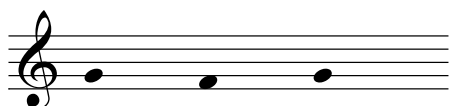
0 mc ms-11



0 mc ms-13

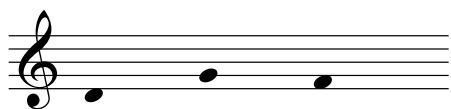


0 mc ms-14

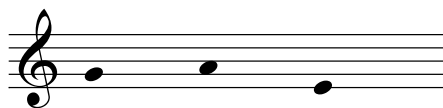


Grade 1

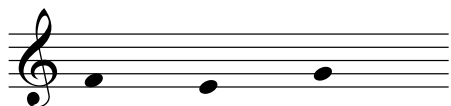
1 mc ms-2



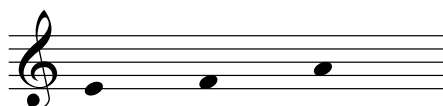
1 mc ms-4



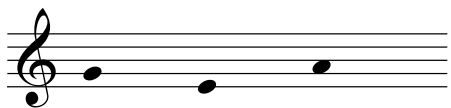
1 mc ms-5



1 mc ms-6

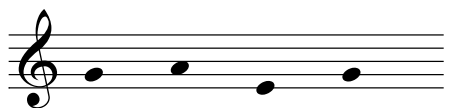


1 mc ms-10



Grade 2

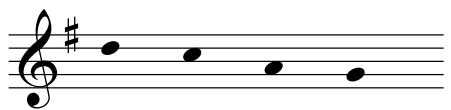
2 mc ms-3



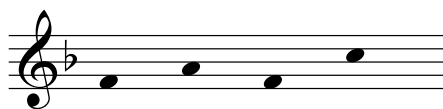
2 mc ms-6



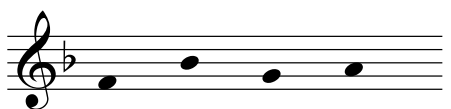
2 mc ms-7



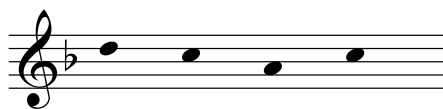
2 mc ms-8



2 mc ms-9

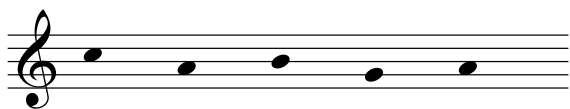


2 mc ms-10

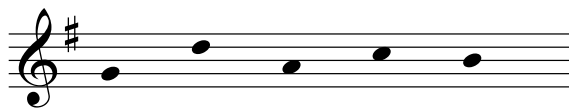


Grade 3

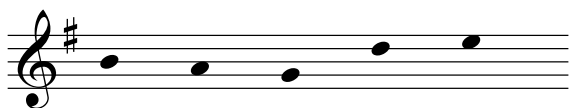
3 mc ms-3



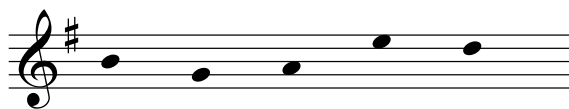
3 mc ms-5



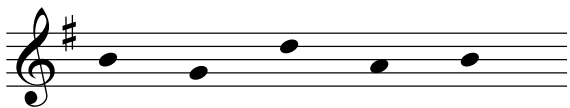
3 mc ms-6



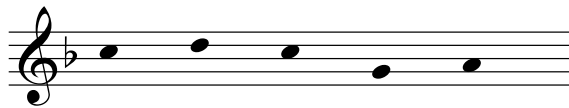
3 mc ms-7



3 mc ms-8



3 mc ms-10

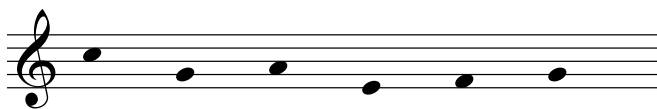


Grade 4

4 mc ms-2



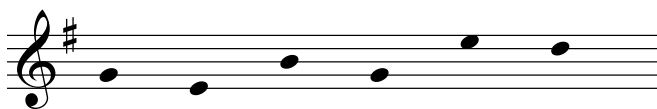
4 mc ms-3



4 mc ms-4



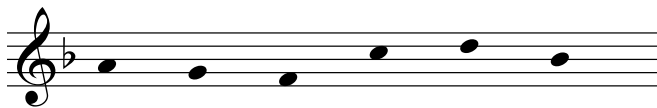
4 mc ms-5



4 mc ms-8



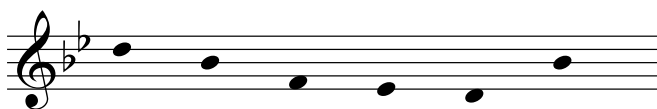
4 mc ms-9



4 mc ms-11

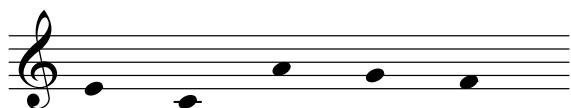


4 mc ms-13

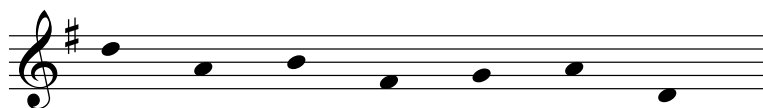


Grade 5

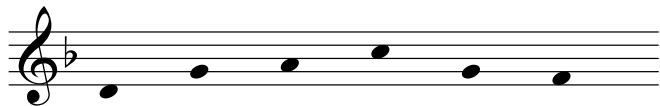
5 mc ms-2



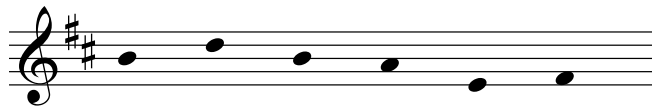
5 mc ms-3



5 mc ms-6



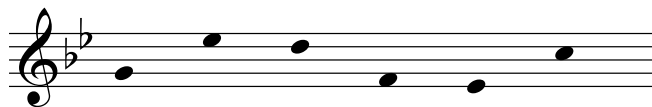
5 mc ms-8



5 mc ms-9

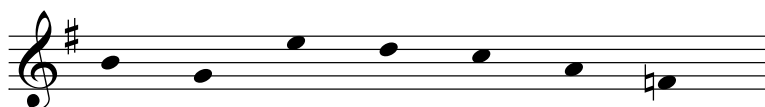


5 mc ms-10

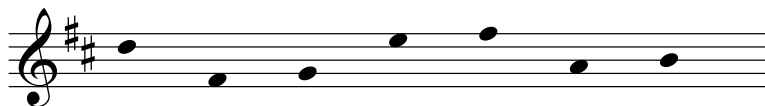


Grade 6

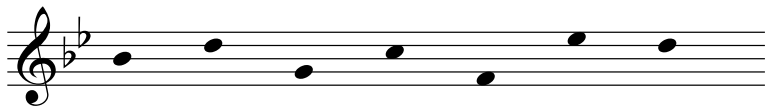
6 mc ms-2



6 mc ms-4



6 mc ms-6



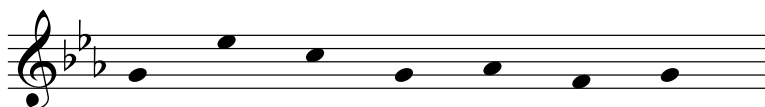
6 mc ms-7



6 mc ms-8

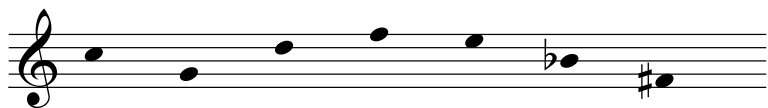


6 mc ms-10



Grade 7

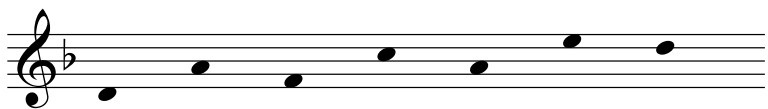
7 mc ms-2



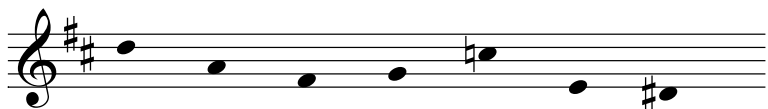
7 mc ms-4



7 mc ms-5



7 mc ms-6

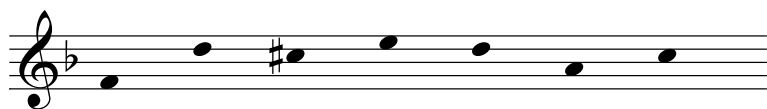


7 mc ms-8

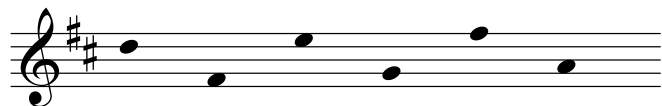


Grade 8

8 mc ms-2



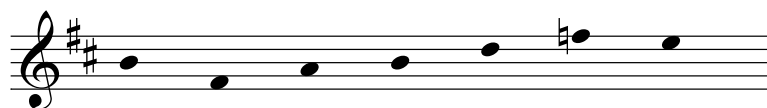
8 mc ms-3



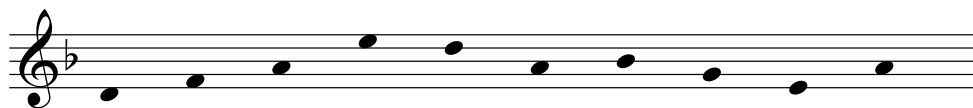
8 mc ms-3 (vocal)



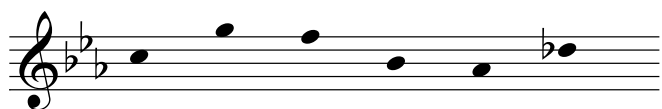
8 mc ms-4



8 mc ms-4 (vocal)



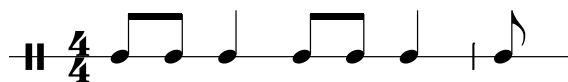
8 mc ms-8



Improvisation samples (unworked): Rhythmic

Grade 1

1 mc rs-1



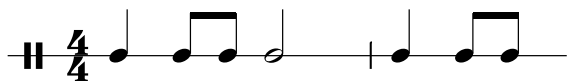
1 mc rs-2



1 mc rs-3



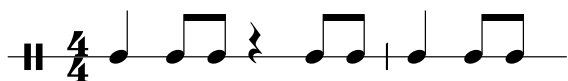
1 mc rs-5



1 mc rs-6



1 mc rs-7



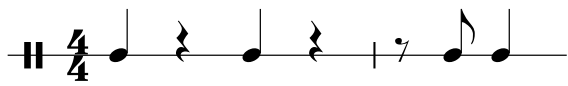
1 mc rs-8



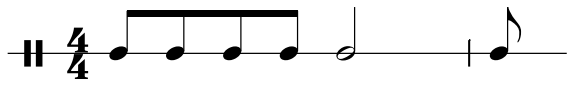
1 mc rs-9



1 mc rs-10

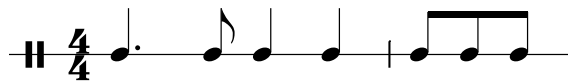


1 mc rs-11



Grade 2

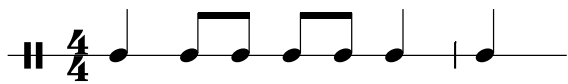
2 mc rs-2



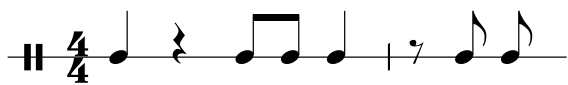
2 mc rs-3



2 mc rs-4



2 mc rs-5



2 mc rs-6



2 mc rs-7



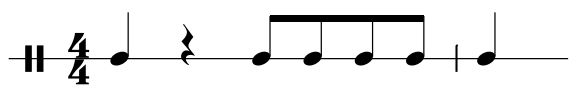
2 mc rs-8



2 mc rs-9



2 mc rs-10

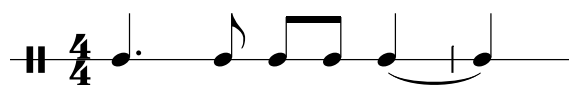


2 mc rs-11



Grade 3

3 mc rs-1



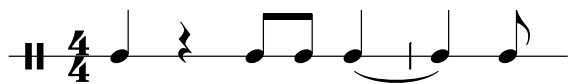
3 mc rs-2



3 mc rs-3



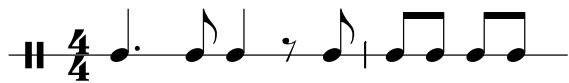
3 mc rs-4



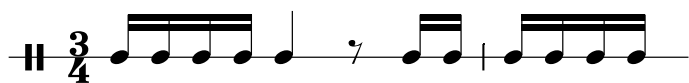
3 mc rs-5



3 mc rs-6



4 mc rs-4



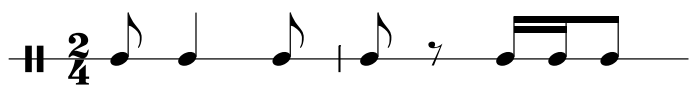
4 mc rs-5



4 mc rs-6



4 mc rs-7



4 mc rs-9



4 mc rs-10



4 mc rs-11



Grade 5

5 mc rs-2



5 mc rs-3



Improvisation samples (unworked): Chordal

Initial

0 mc cs-2

Musical notation for the Initial sample, consisting of four measures. The first measure has a G chord in the treble clef and a single G note in the bass clef. The second measure has a G chord in the treble clef and a single G note in the bass clef. The third measure has a C chord in the treble clef and a single C note in the bass clef. The fourth measure has a C chord in the treble clef and a single C note in the bass clef. Chord symbols G, G, C, and C are placed above the treble clef staff. A fermata is placed over the final C chord and note.

Grade 1

1 mc cs-2

Musical notation for the Grade 1 sample, consisting of four measures. The first measure has a C chord in the treble clef and a single C note in the bass clef. The second measure has a C chord in the treble clef and a single C note in the bass clef. The third measure has a G chord in the treble clef and a single G note in the bass clef. The fourth measure has a C chord in the treble clef and a single C note in the bass clef. Chord symbols C, C, G, and C are placed above the treble clef staff. A fermata is placed over the final C chord and note.

1 mc cs-3

Musical notation for the Grade 1 sample, consisting of four measures. The first measure has a G chord in the treble clef and a single G note in the bass clef. The second measure has a C chord in the treble clef and a single C note in the bass clef. The third measure has a G chord in the treble clef and a single G note in the bass clef. The fourth measure has a C chord in the treble clef and a single C note in the bass clef. Chord symbols G, C, G, and C are placed above the treble clef staff. A fermata is placed over the final C chord and note.

1 mc cs-4

Musical notation for the Grade 1 sample, consisting of four measures. The first measure has a C chord in the treble clef and a single C note in the bass clef. The second measure has a G chord in the treble clef and a single G note in the bass clef. The third measure has a G chord in the treble clef and a single G note in the bass clef. The fourth measure has a C chord in the treble clef and a single C note in the bass clef. Chord symbols C, G, G, and C are placed above the treble clef staff. A fermata is placed over the final C chord and note.

Grade 2

2 mc cs-2

C C/E F G *last time* C

2 mc cs-3

G C F G *last time* C

2 mc cs-4

F C G C

2 mc cs-5

F G F C

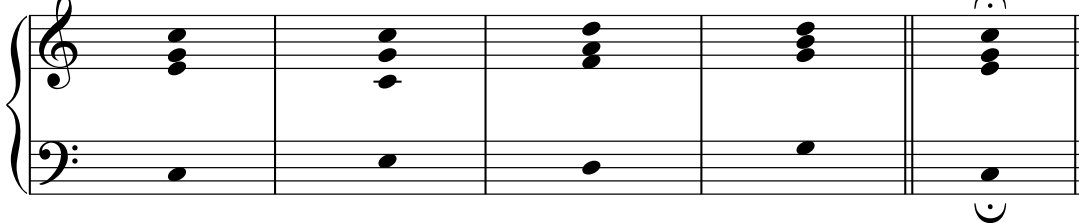
2 mc cs-6

F C F C

Grade 3

3 mc cs-2

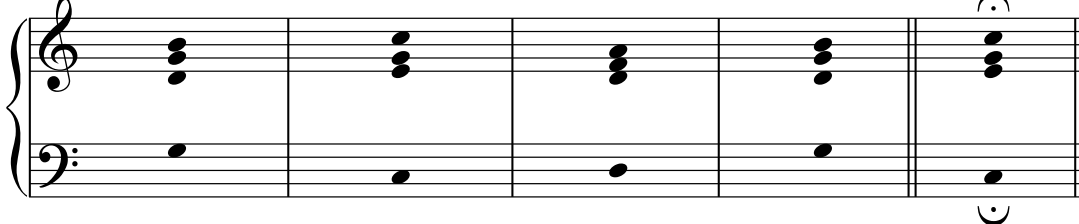
C C Dm G *last time* C



Musical notation for 3 mc cs-2. The piece is in 3/4 time. The first four measures contain chords C, C, Dm, and G. The fifth measure contains a C chord with a fermata, labeled "last time". The bass line consists of quarter notes: C2, C2, D2, G2, and C2.

3 mc cs-3

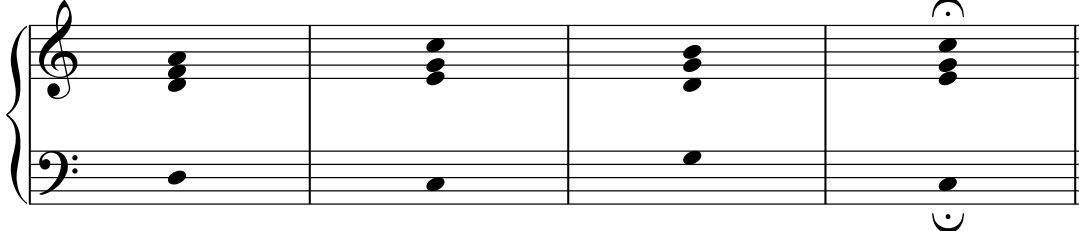
G C Dm G *last time* C



Musical notation for 3 mc cs-3. The piece is in 3/4 time. The first four measures contain chords G, C, Dm, and G. The fifth measure contains a C chord with a fermata, labeled "last time". The bass line consists of quarter notes: G2, C2, D2, G2, and C2.

3 mc cs-4

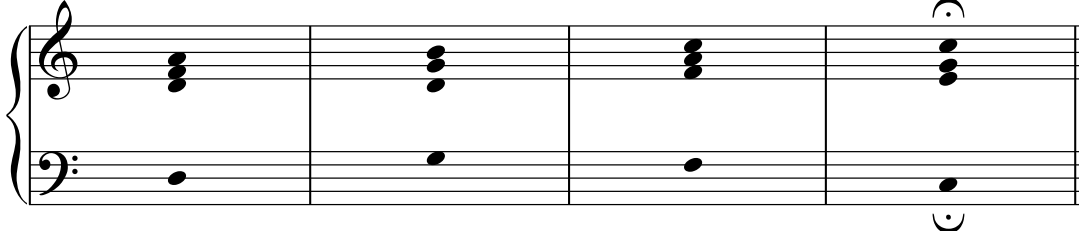
Dm C G C



Musical notation for 3 mc cs-4. The piece is in 3/4 time. The first four measures contain chords Dm, C, G, and C. The bass line consists of quarter notes: D2, C2, G2, and C2.

3 mc cs-5

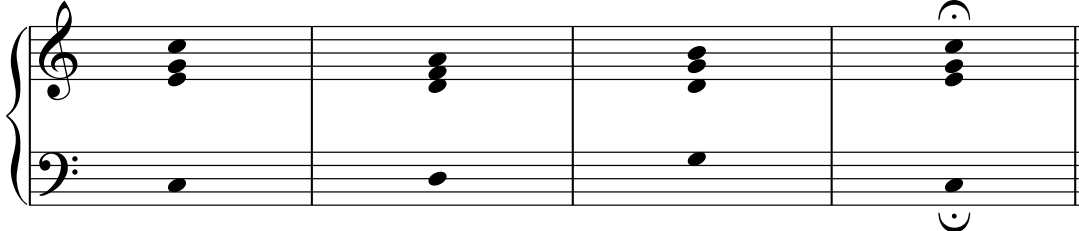
Dm G F C



Musical notation for 3 mc cs-5. The piece is in 3/4 time. The first four measures contain chords Dm, G, F, and C. The bass line consists of quarter notes: D2, G2, F2, and C2.

3 mc cs-6

C Dm G C

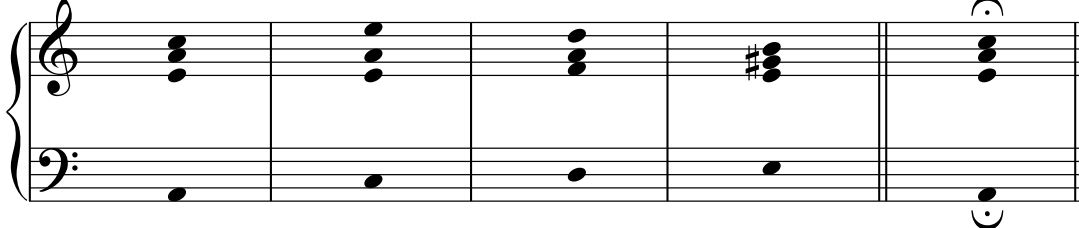


Musical notation for 3 mc cs-6. The piece is in 3/4 time. The first four measures contain chords C, Dm, G, and C. The bass line consists of quarter notes: C2, D2, G2, and C2.

Grade 4

4 mc cs-2

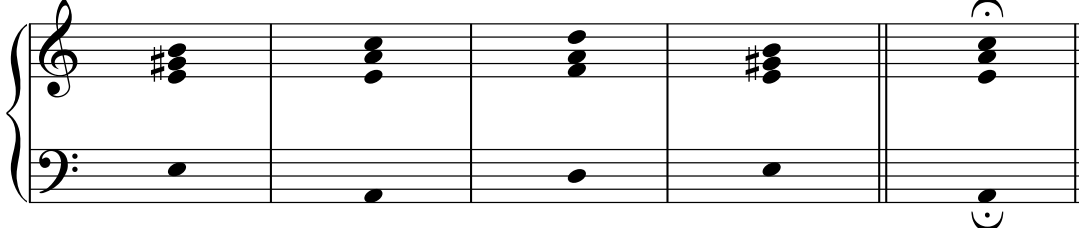
Am Am Dm E *last time* Am



Musical notation for 4 mc cs-2. The piece is in 4/4 time. The first four measures contain chords Am, Am, Dm, and E. The fifth measure contains Am and is marked with a repeat sign and the text "last time". The bass line consists of quarter notes: C2, C2, D2, E2, and C2.

4 mc cs-3

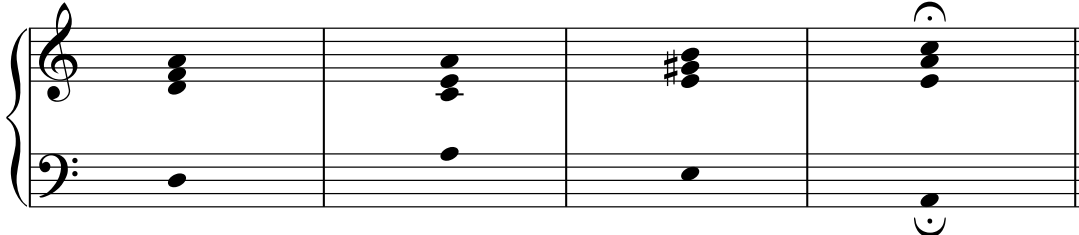
E Am Dm E *last time* Am



Musical notation for 4 mc cs-3. The piece is in 4/4 time. The first four measures contain chords E, Am, Dm, and E. The fifth measure contains Am and is marked with a repeat sign and the text "last time". The bass line consists of quarter notes: C2, C2, D2, E2, and C2.

4 mc cs-4

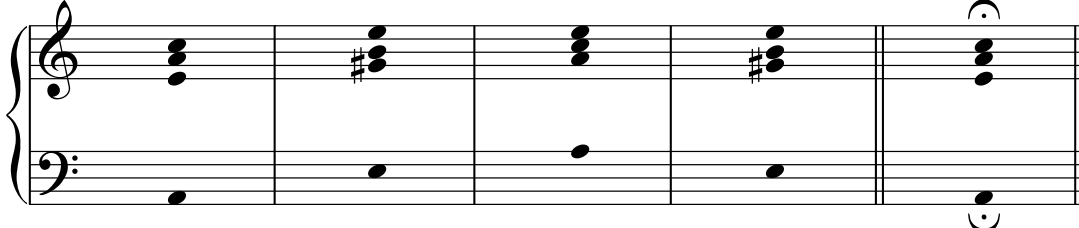
Dm Am E Am



Musical notation for 4 mc cs-4. The piece is in 4/4 time. The four measures contain chords Dm, Am, E, and Am. The bass line consists of quarter notes: C2, D2, E2, and C2.

4 mc cs-5

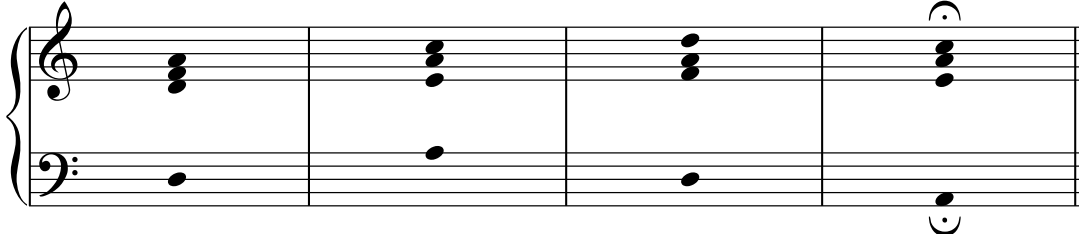
Am E Am E *last time* Am



Musical notation for 4 mc cs-5. The piece is in 4/4 time. The first four measures contain chords Am, E, Am, and E. The fifth measure contains Am and is marked with a repeat sign and the text "last time". The bass line consists of quarter notes: C2, C2, D2, E2, and C2.

4 mc cs-6

Dm Am Dm Am

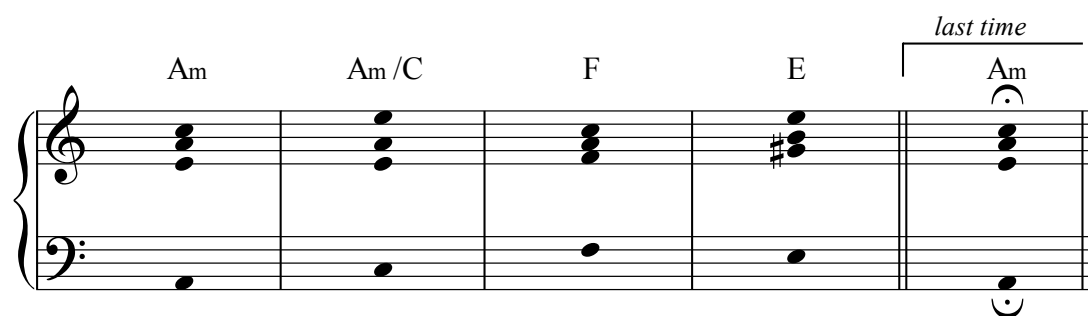


Musical notation for 4 mc cs-6. The piece is in 4/4 time. The four measures contain chords Dm, Am, Dm, and Am. The bass line consists of quarter notes: C2, D2, E2, and C2.

Grade 5

5 mc cs-2

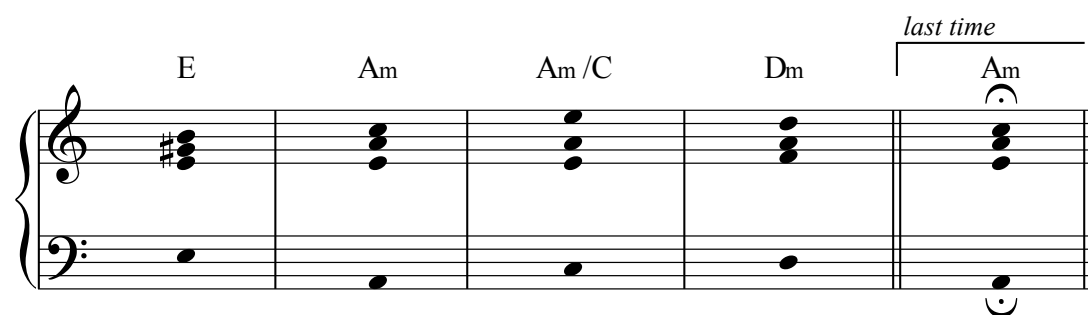
Am Am/C F E *last time* Am



Musical notation for 5 mc cs-2. The piece is in G major and 4/4 time. The first four measures contain chords Am, Am/C, F, and E. The fifth measure contains Am, which is bracketed and labeled "last time". The bass line consists of single notes: G, C, F, G, and G.

5 mc cs-3

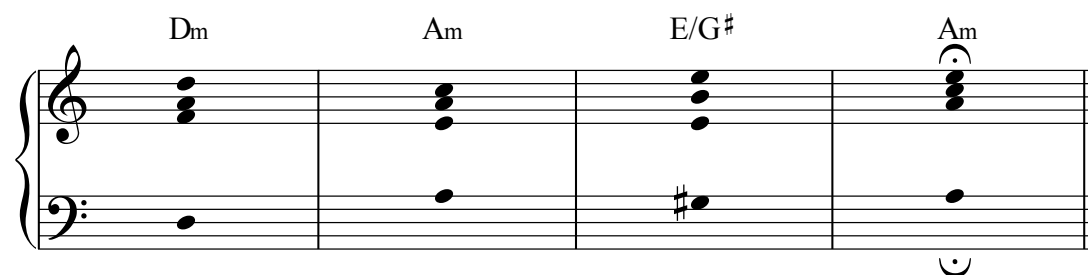
E Am Am/C Dm *last time* Am



Musical notation for 5 mc cs-3. The piece is in G major and 4/4 time. The first four measures contain chords E, Am, Am/C, and Dm. The fifth measure contains Am, which is bracketed and labeled "last time". The bass line consists of single notes: G, C, F, G, and G.

5 mc cs-4

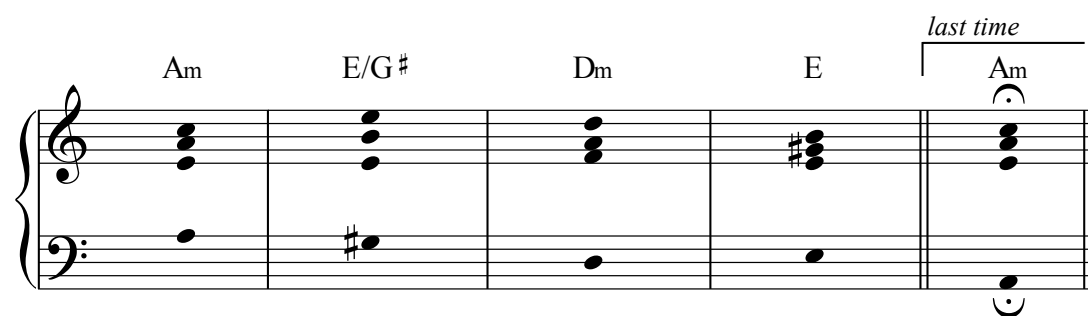
Dm Am E/G# Am



Musical notation for 5 mc cs-4. The piece is in G major and 4/4 time. The first four measures contain chords Dm, Am, E/G#, and Am. The bass line consists of single notes: G, C, F, and G.

5 mc cs-5

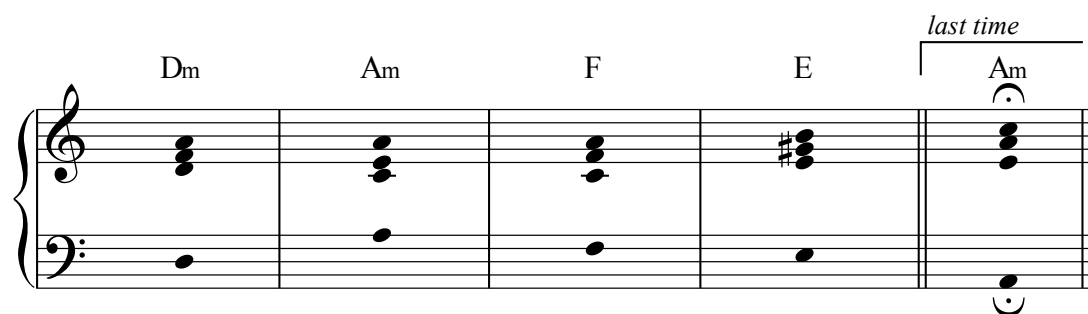
Am E/G# Dm E *last time* Am



Musical notation for 5 mc cs-5. The piece is in G major and 4/4 time. The first four measures contain chords Am, E/G#, Dm, and E. The fifth measure contains Am, which is bracketed and labeled "last time". The bass line consists of single notes: G, C, F, G, and G.

5 mc cs-6

Dm Am F E *last time* Am



Musical notation for 5 mc cs-6. The piece is in G major and 4/4 time. The first four measures contain chords Dm, Am, F, and E. The fifth measure contains Am, which is bracketed and labeled "last time". The bass line consists of single notes: G, C, F, G, and G.

Grade 6

6 mc cs-2

C C/E Dm⁷ G⁷ *last time* C

6 mc cs-3

G⁷ C C/E F *last time* C

6 mc cs-4

F C Dm⁷ C

6 mc cs-5

C⁷ G/B G C

6 mc cs-6

F C/E Dm G⁷ *last time* C

6 mc cs-7

Musical notation for 6 mc cs-7. The piece is in C major and consists of four measures. The chords are C, Am⁷, F, and C. The bass line consists of single notes: C, A, F, and C. The treble clef part shows chord voicings: C (C4, E4, G4), Am⁷ (A3, C4, E4, G4), F (F3, A3, C4), and C (C4, E4, G4). A fermata is placed over the final C chord.

6 mc cs-8

Musical notation for 6 mc cs-8. The piece is in C major and consists of five measures. The chords are Dm⁷, G⁷, C, G⁷, and C. The bass line consists of single notes: D, G, C, G, and C. The treble clef part shows chord voicings: Dm⁷ (D3, F3, A3, C4), G⁷ (G3, B3, D4, F4), C (C4, E4, G4), G⁷ (G3, B3, D4, F4), and C (C4, E4, G4). A bracket labeled "last time" spans the final C chord, which has a fermata.

6 mc cs-9

Musical notation for 6 mc cs-9. The piece is in C major and consists of five measures. The chords are C, C⁷/E, F, G, and C. The bass line consists of single notes: C, E, F, G, and C. The treble clef part shows chord voicings: C (C4, E4, G4), C⁷/E (C4, E4, G4, Bb4), F (F3, A3, C4), G (G3, B3, D4), and C (C4, E4, G4). A bracket labeled "last time" spans the final C chord, which has a fermata.

6 mc cs-10

Musical notation for 6 mc cs-10. The piece is in C major and consists of four measures. The chords are C, C⁷/E, G⁷, and C. The bass line consists of single notes: C, E, G, and C. The treble clef part shows chord voicings: C (C4, E4, G4), C⁷/E (C4, E4, G4, Bb4), G⁷ (G3, B3, D4, F4), and C (C4, E4, G4). A fermata is placed over the final C chord.

6 mc cs-11

Musical notation for 6 mc cs-11. The piece is in C major and consists of four measures. The chords are F⁷, C, G⁷, and C. The bass line consists of single notes: F, C, G, and C. The treble clef part shows chord voicings: F⁷ (F3, Ab3, C4, Eb4), C (C4, E4, G4), G⁷ (G3, B3, D4, F4), and C (C4, E4, G4). A fermata is placed over the final C chord.

6 mc cs-12

Musical notation for exercise 6 mc cs-12. The piece is in 6/8 time and consists of five measures. The first four measures are: F⁷, C, C/E, and G⁷. The fifth measure is marked "last time" and contains a C chord. The notation shows a treble clef with a key signature of one flat (B-flat) and a bass clef. The chords are represented by block chords in the treble clef and single notes in the bass clef.

6 mc cs-13

Musical notation for exercise 6 mc cs-13. The piece is in 6/8 time and consists of five measures. The first four measures are: G⁷/B, C, C/E, and G. The fifth measure is marked "last time" and contains a C chord. The notation shows a treble clef with a key signature of one flat (B-flat) and a bass clef. The chords are represented by block chords in the treble clef and single notes in the bass clef.

6 mc cs-14

Musical notation for exercise 6 mc cs-14. The piece is in 6/8 time and consists of four measures. The first three measures are: D_m⁷, G, and G⁷/B. The fourth measure is marked "last time" and contains a C chord. The notation shows a treble clef with a key signature of one flat (B-flat) and a bass clef. The chords are represented by block chords in the treble clef and single notes in the bass clef.

Grade 7

7 mc cs-2

Musical notation for 7 mc cs-2. The piece is in C major. The chord progression is Am, E7, F, Dm, E, E7, and Am. The Am chord is marked as "last time". The notation shows a grand staff with treble and bass clefs. The bass line consists of single notes: C, G, F, D, E, E, and C. The treble line shows chords: Am (C4, E4, G4), E7 (G#4, B4, D5), F (F4, A4, C5), Dm (F4, A4, B4), E (G#4, B4, D5), E7 (G#4, B4, D5), and Am (C4, E4, G4). The final Am chord is circled and labeled "last time".

7 mc cs-3

Musical notation for 7 mc cs-3. The piece is in G major. The chord progression is G, B7, C, Am, Am7/D, D7, and G. The G chord is marked as "last time". The notation shows a grand staff with treble and bass clefs. The bass line consists of single notes: G, D, C, B, Am7/D (G, B, D), D7 (F#, A, C), and G. The treble line shows chords: G (G4, B4, D5), B7 (D#5, F#5, A5), C (C4, E4, G4), Am (A4, C5, E5), Am7/D (G4, B4, D5), D7 (F#5, A5, C6), and G (G4, B4, D5). The final G chord is circled and labeled "last time".

7 mc cs-4

Musical notation for 7 mc cs-4. The piece is in G major. The chord progression is Em, B7, B7/D#, Em, B7, and Em. The Em chord is marked as "last time". The notation shows a grand staff with treble and bass clefs. The bass line consists of single notes: G, D, D#, G, B, and G. The treble line shows chords: Em (E4, G4, B4), B7 (D#5, F#5, A5), B7/D# (D#5, F#5, A5), Em (E4, G4, B4), B7 (D#5, F#5, A5), and Em (E4, G4, B4). The final Em chord is circled and labeled "last time".

7 mc cs-5

Musical notation for 7 mc cs-5. The piece is in C major. The chord progression is C7, G/B, G, and C. The C chord is marked as "last time". The notation shows a grand staff with treble and bass clefs. The bass line consists of single notes: F, C, G, and C. The treble line shows chords: C7 (C4, E4, G4, Bb4), G/B (G4, B4, D5), G (G4, B4, D5), and C (C4, E4, G4). The final C chord is circled and labeled "last time".

7 mc cs-6

Bm A⁷ D D/F# C^{#7}/G# F^{#7} *last time* Bm

7 mc cs-7

A E⁷/G# F#m D/F# C^{#7}/E# E⁷ *last time* A

7 mc cs-8

F#m F⁷ Bm C^{#7} F#m

7 mc cs-9

F F⁶ Gm⁷ C⁷ B^b/F F

7 mc cs-10

Dm Gm A Edim A⁷ Dm

7 mc cs-11

B \flat C 7 /B \flat F/A Dm Gm C 7 B \flat *last time*

7 mc cs-12

Gm D 7 /A Gm/B \flat Cm D 7 Adim 7 D 7 Gm *last time*

7 mc cs-13

E \flat A \flat E \flat Cm 7 F 7 B \flat 7 E \flat *last time*

7 mc cs-14

Cm Cm/E \flat Fm Fm/A \flat Ddim 7 G 7 Cm

7 mc cs-15

C Em Dm Dm/F Dm 7 /G G 7 C *last time*

7 mc cs-16

Am F/A E/G# Am F Dm E⁷ Am

7 mc cs-17

B^b F/A F⁷ B^b C⁷ F/A C⁷ F

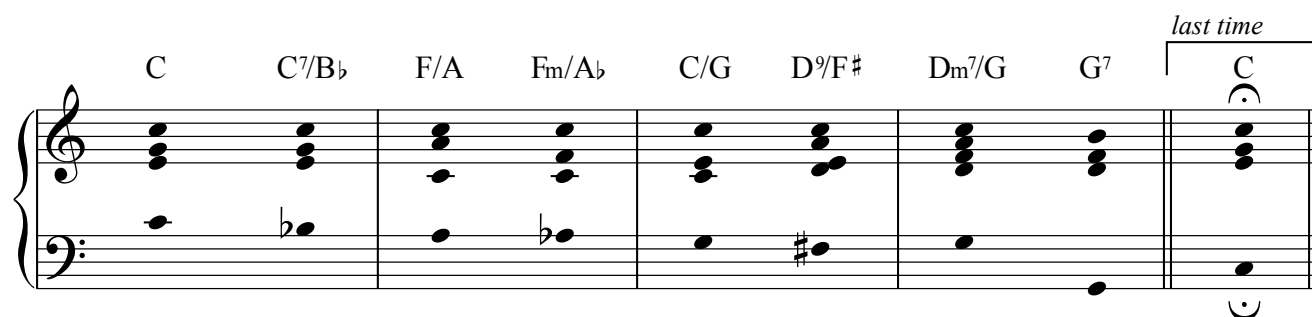
7 mc cs-18

Dm Dm/F E^{dim} A⁷ Dm Dm/F Gm⁷ A⁷ *last time* Dm

Grade 8

8 mc cs-1

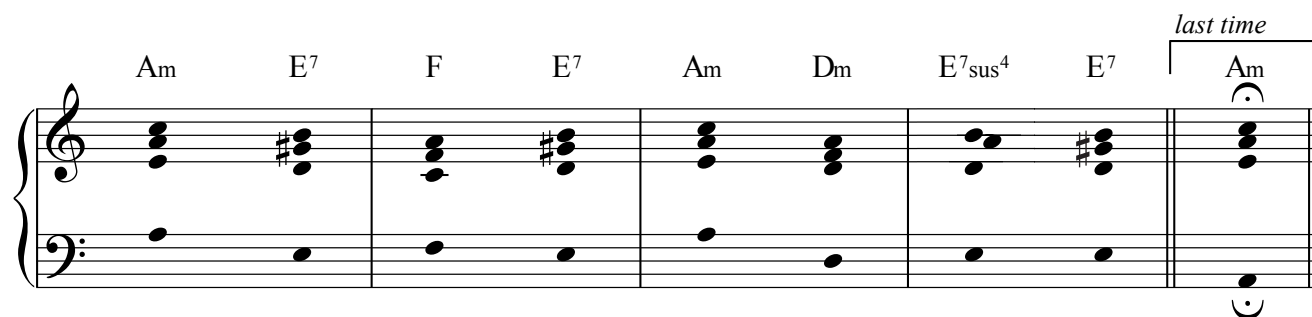
C C7/B \flat F/A Fm/A \flat C/G D $^{\flat}$ /F \sharp Dm 7 /G G 7 *last time* C



Musical notation for 8 mc cs-1. The piece is in C major. The chord progression is: C, C7/B \flat , F/A, Fm/A \flat , C/G, D $^{\flat}$ /F \sharp , Dm 7 /G, G 7 , and a final C chord marked "last time". The notation shows the treble and bass staves with chord voicings.

8 mc cs-2

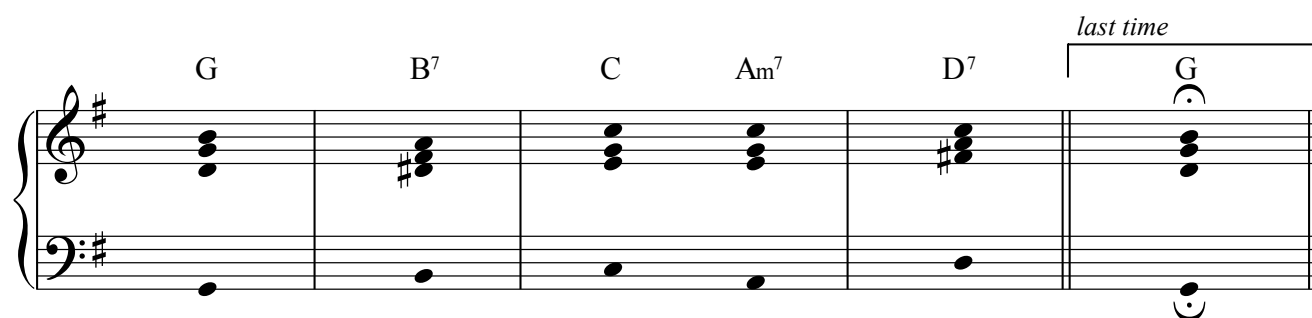
Am E 7 F E 7 Am Dm E 7 _{sus 4} E 7 *last time* Am



Musical notation for 8 mc cs-2. The piece is in C major. The chord progression is: Am, E 7 , F, E 7 , Am, Dm, E 7 _{sus 4} , E 7 , and a final Am chord marked "last time". The notation shows the treble and bass staves with chord voicings.

8 mc cs-3

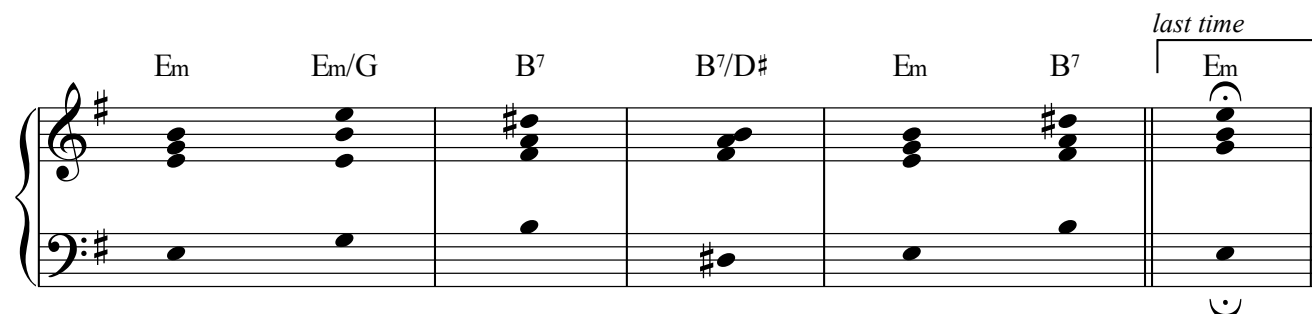
G B 7 C Am 7 D 7 *last time* G



Musical notation for 8 mc cs-3. The piece is in G major. The chord progression is: G, B 7 , C, Am 7 , D 7 , and a final G chord marked "last time". The notation shows the treble and bass staves with chord voicings.

8 mc cs-4

Em Em/G B 7 B 7 /D \sharp Em B 7 *last time* Em



Musical notation for 8 mc cs-4. The piece is in E minor. The chord progression is: Em, Em/G, B 7 , B 7 /D \sharp , Em, B 7 , and a final Em chord marked "last time". The notation shows the treble and bass staves with chord voicings.

8 mc cs-5

D F# Bm Em Em⁷/G A⁷ *last time* D

8 mc cs-6

Bm B⁷ Em F⁷ Bm Em C⁷ F⁷ *last time* Bm

8 mc cs-7

A Adim⁷ E⁹/G# E/G# F#m D/F# C^{b9}/E# C#/E# *last time* A

8 mc cs-8

F#m F⁷ Bm C# F#sus⁴ F#⁷

8 mc cs-9

F F⁶ Fma⁷ Gm⁷ C⁷ *last time* F

8 mc cs-12

Gm D7/A Gm/B \flat G7/B \sharp Cm D7 Gm D7 *last time* Gm

8 mc cs-13

E \flat A \flat F7 B \flat 7 E \flat Cm7 A \flat ma7/F B \flat 7 *last time* E \flat

8 mc cs-14

Cmsus 2 Cm F7sus 4 Fm7 D7 G7 Csus 4 Cm

8 mc cs-15

C Caug F Dm7 G7 *last time* C

8 mc cs-16

Am F/A B7 Em Am F/A B7 E7 *last time* Am

8 mc cs-17

Musical score for 8 mc cs-17. The score is in G major (one sharp) and 4/4 time. It consists of two staves: a treble clef staff and a bass clef staff. The treble staff contains chords for each measure, and the bass staff contains single notes. The chords are: B \flat , F/A, A 7 , Dm, B \flat dim 7 , F/A, C 7 , and F. The final measure has a fermata over the F chord. The bass line consists of quarter notes: G, A, B, C, D, E, F, G.

8 mc cs-18

Musical score for 8 mc cs-18. The score is in G major (one sharp) and 4/4 time. It consists of two staves: a treble clef staff and a bass clef staff. The treble staff contains chords for each measure, and the bass staff contains single notes. The chords are: Dm, Dm/F, Em $^7(b^5)$, A 7 , F, F/A, B \flat , C 7 , and Dm. The final measure has a fermata over the Dm chord and is marked "last time". The bass line consists of quarter notes: G, A, B, C, D, E, F, G.